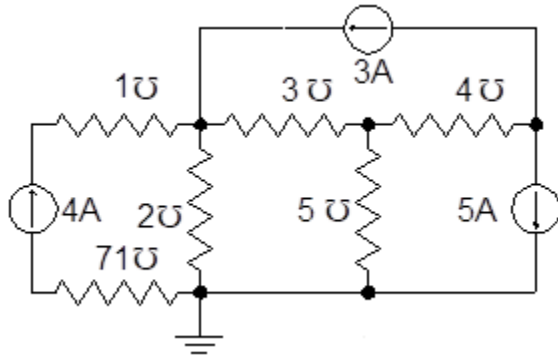


Homework 6 Nodal Analysis

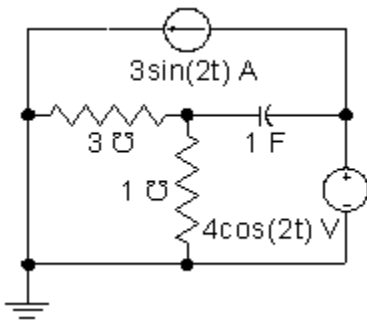
HW26:

Use nodal analysis to solve for all the node potentials in the circuit below:



HW27:

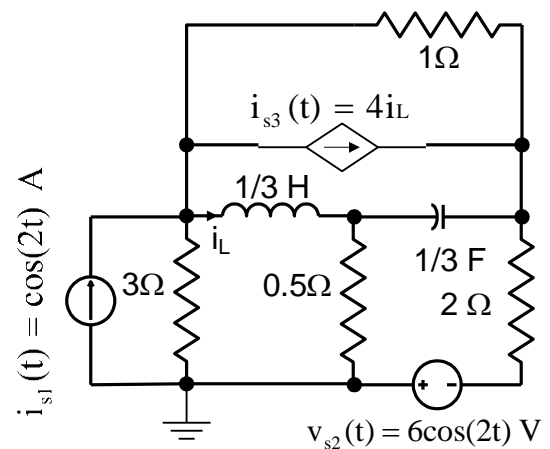
Use nodal analysis to solve for all the node potentials in the circuit below:



HW28:

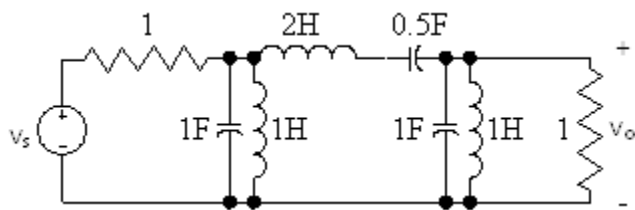
Consider the circuit shown below.

- Write the Nodal Analysis Matrix equation you would get if you pretend the dependent source were independent. Make all other simplifications.
- Put the matrix in standard form by inserting the source dependency and reorganizing the equation.



HW29:

Use nodal analysis to find the transfer function $H(s) = V_o/V_s$ for the circuit below:



HW30:

Use nodal analysis to find the current through the 5Ω resistor in the circuit below:

